

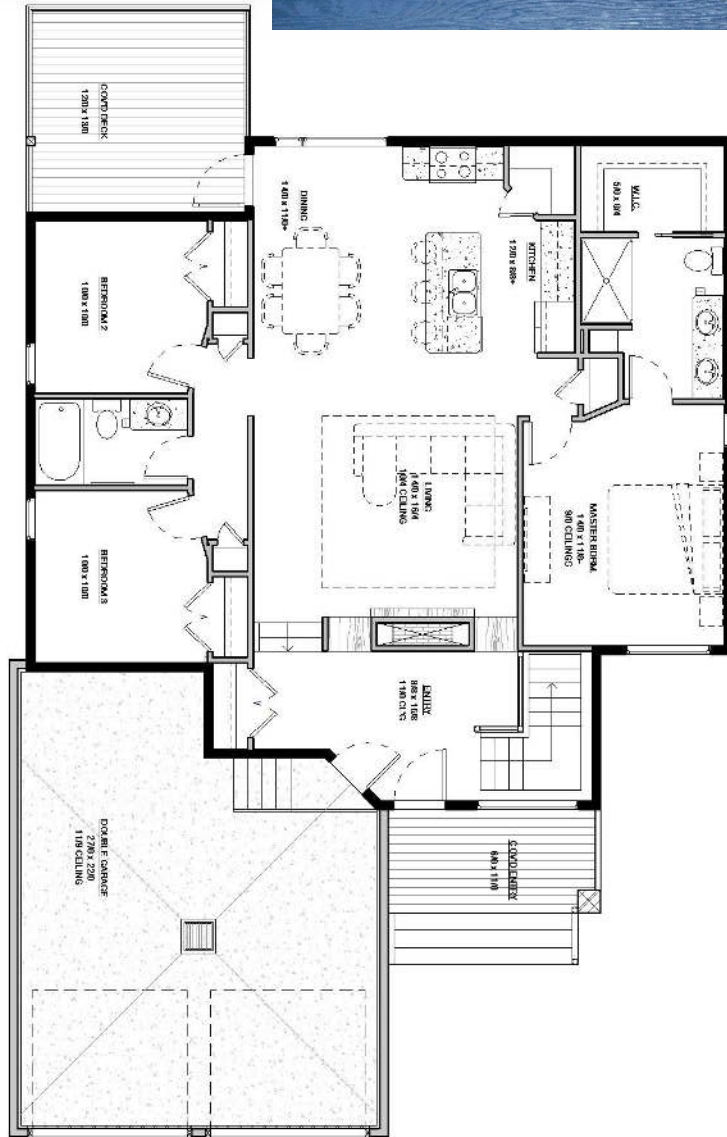


HOMES BY JMS

THE HUDSON

FEATURES

- 1367 or 1436 sq ft options
- 3 bedrooms
- 2 bathrooms
- Open concept
- Pile Foundation (if applicable)
- Double Car garage
- Covered front entry & back deck
- 9' ceilings
- Main floor 2 way fireplace
- Carpet & LVT/LVP Flooring
- Walk in Closet & Master Ensuite with His/Hers Sinks
- Quartz/Granite countertops
- Upgraded finishing & lighting
- Upgraded Bath & Kitchen fixtures



This home is available in a walk out basement option.

For Sales Inquiries Contact:

Josh Kasper

Phone: (306) 537-9281

Email: info@homesbyjms.ca

www.homesbyjms.ca — 306-537-9281 — info@homesbyjms.ca

Copyright of this plan remains with Homes by JMS. Duplication of this plan in whole or part is strictly prohibited without permission of Homes by JMS.